

The novel core shell rubber toughening system for Epoxy Resin

• Applications

- Aerospace industry
- Automotive industry
 - E & E
- Wind Energy
 - Adhesives

This new predispersed core shell rubber (CSR) offers:

| **Consistent Morphology**

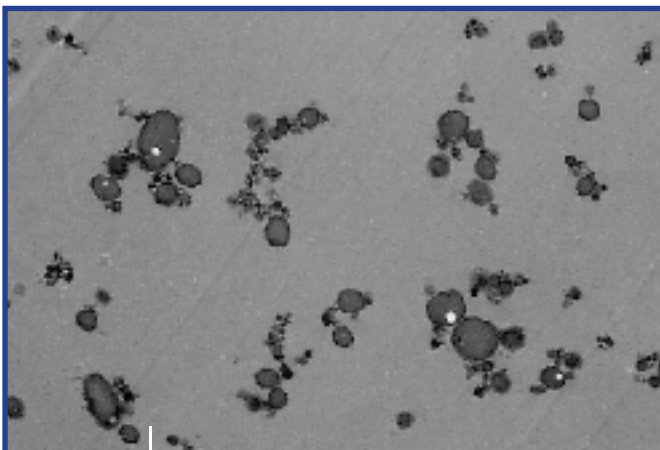
| **Excellent Toughening Effect**

| **No loss of Tg / Heat Resistance**

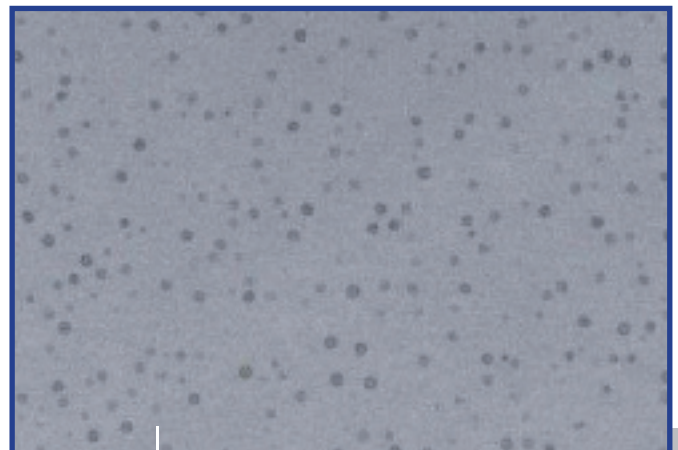
| **Easy Handling & Mixing**

| **Various CSR and epoxy systems available**

Brief overview can be found on reverse side.



TEM picture showing the dispersion of conventional CSR in epoxy matrix



TEM picture showing the dispersion of Kane Ace MX in epoxy matrix

KANE ACE[®] MX

KANE ACE [®]	Matrix Resin System	Dispersed CSR Type*	% CSR	Nominal Viscosity	Nominal EEW	Specific Gravity
	<i>Unit of measure</i>		<i>wt %</i>	<i>cps</i>	<i>g/eq</i>	<i>g/cc</i>
MX 120						
	Standard Liquid Bis A Epoxy	CSR1	25 ± 1	22,000 @ 50°C	243	1,1
MX 125						
	Standard Liquid Bis A Epoxy	CSR1	25 ± 1	7,500 @ 50°C	243	1,1
MX 130						
	Standard Liquid Bis F Epoxy	CSR1	25 ± 1	12,500 @ 50°C	220	1,1
MX 136						
	Standard Liquid Bis F Epoxy	CSR2	25 ± 1	2,600 @ 50°C	220	1,1
MX 153						
	Standard Liquid Bis A Epoxy	CSR2	33 ± 1	20,000 @ 50°C	270	1,1
MX 156						
	Standard Liquid Bis A Epoxy	CSR2	25 ± 1	7,800 @ 50°C	243	1,1
MX 551						
	Cycloaliphatic Epoxy	CSR1	25 ± 1	7,000 @ 50°C	180	1,1
MX 416						
	Multi-Functional TGMDA Epoxy	CSR2	25 ± 1	32,000 @ 50°C	148	1,1
MX 451						
	Multi-Functional TGPAP Epoxy	CSR1	25 ± 1	13,000 @ 50°C	130	1,1
MX 717						
	Polypropylene Glycol 1000 mw	CSR2	25 ± 1	1,000 @ 25°C	84(OH)	1,0
MX 960						
	Standard Liquid Bis A Epoxy Si CSR	Si CSR	25 ± 1	3,000 @ 50°C	243	1,1

CSR type* CSR1: Standard Core-Shell Rubber - CSR2: Low Temperature Toughening Improved Core-Shell Rubber - Si CSR: Silicone-based Core-Shell Rubber. Above data are for product selection only. All technical statements, information and recommendations in this catalogue are based on tests and data, which are reliable to the best of Kaneka's knowledge. Due to possible variations of conditions and processing methods beyond our control, no guarantees or warranties are expressed or implied as to use, handling or processing of Kane Ace. There is no warranty of merchantability and fitness for particular purpose. No suggestions are made in the catalogue whatsoever for infringement of any patents. We expressly disclaim liabilities for any damage, arising from the use, handling or processing of Kane Ace, as well as for the consequences, whether or not Kane Ace has been used, or is alleged to have been used, in accordance with the instructions given in the catalogue.

EUROPE

KANEKA BELGIUM N.V.

Head Office and Plant

Nijverheidsstraat 16
B-2260 Westerlo-Oevel, Belgium
Tel. +32 (0) 14 25 78 00
Fax +32 (0) 14 25 78 81
E-mail: info.mx@kaneka.be

Sales Office

Triomflaan 173
B-1160 Brussels, Belgium
Tel. +32 (0) 2 663 01 70
Fax +32 (0) 2 672 28 22

JAPAN

KANEKA CORPORATION

Tokyo Head Office

1-12-32, Akasaka, Minato-ku
Tokyo 107-6025, Japan
Tel. +81 3 5574 8000
Fax +81 3 5574 8120
E-mail: info@kaneka.co.jp

U.S.A.

KANEKA TEXAS CORPORATION

Head Office

6161 Underwood Road
Pasadena, Texas 77507, USA
Tel. +1-281-447-0755
Fax +1-281-447-0757
E-mail: mx@kanekatexas.com